

Systeme de cloisons paravento



paravento est un système de cloisons qui permet de créer un bon environnement de travail. Le point fort de paravento est sa grande fonctionnalité technique conjuguée à un aspect convivial.



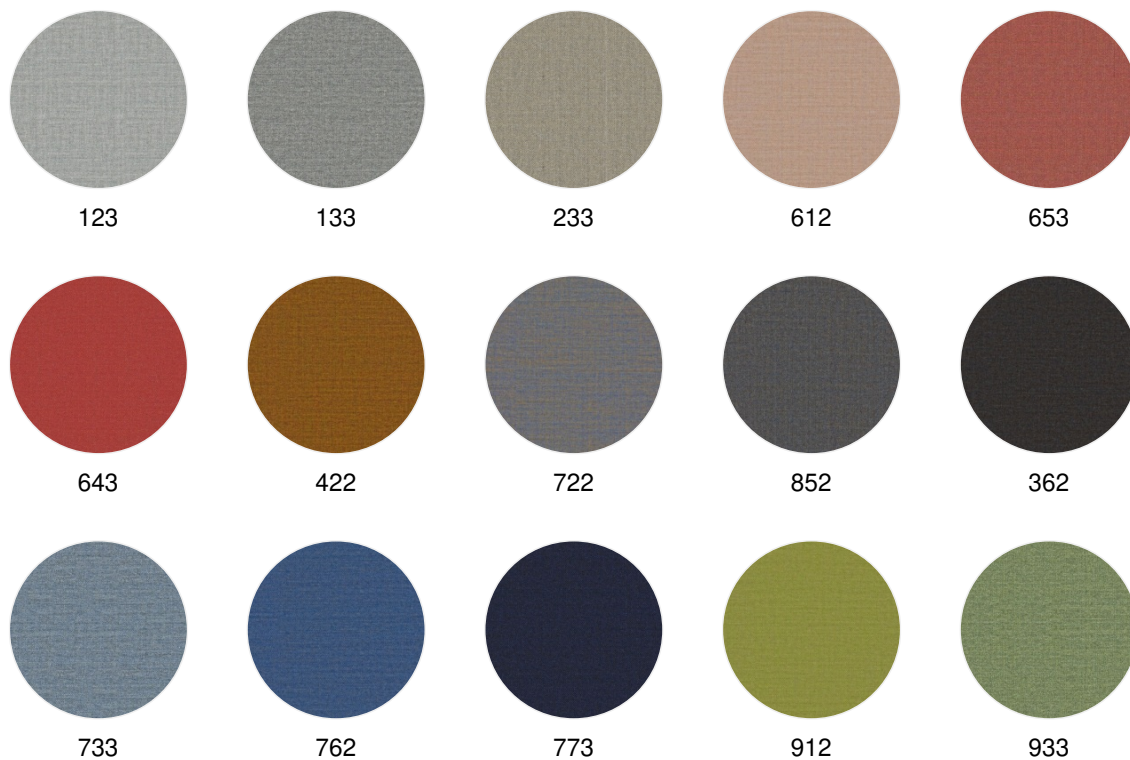
paravento définit l'espace, sépare et permet de s'isoler d'avoir un espace vestiaire ou encore pour téléphoner en toute tranquillité. On peut assembler plusieurs éléments et ainsi créer un nouvel espace. Les salarié.e.s peuvent alors s'isoler, seul.e ou à plusieurs dans un environnement séparer acoustiquement et visuellement pour avancer sur leurs projets. paravento est disponible en deux épaisseurs : S et M. paravento S (Slim) est une cloison uniquement visuelle, paravento M (Medium) est une cloison visuelle et phonique.

Caractéristiques du produit

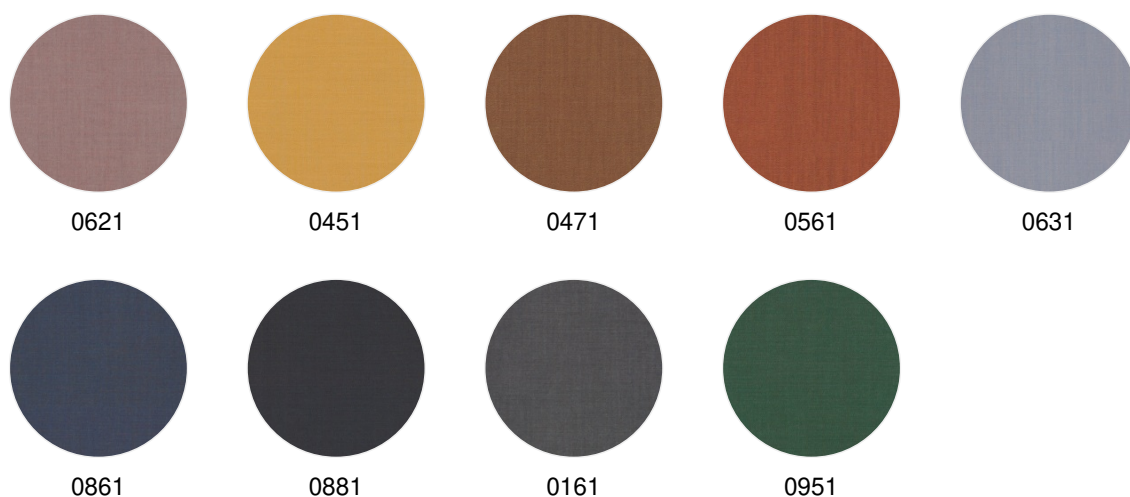
- paravento répond aux problématiques liées à la séparation visuelle et acoustique, à l'organisation et à l'électrification
- L'arrondi de 15 cm de rayon rend paravento unique
- Le rail d'organisation est « invisible »
- Solution intégrée et élégante adaptée à chaque besoin :
 - Sans piètement comme élément autonome ou combinatoire (paroi mobile)
 - Sur la table, avec pieds (paroi mobile)
 - Sur ou derrière la table (paravento screen)
 - Suspendu au plafond (paravento air)
 - Fixé au mur (paravento wall)
 - Il existe des modules prédéfinis : cabine téléphonique, cellule de réflexion, vestiaires, point services, etc. (paravento hub)
- Le système – paravento est disponible en deux modèles:
 - S = Slim, 20 mm d'épaisseur, est une séparation uniquement visuelle
 - M = Medium, 40 mm d'épaisseur, est une séparation visuelle et acoustique en option avec une barre de fonction et add-ons
- Options selon le type :
 - Acoustique Basic ou Premium
 - Avec / sans rail d'organisation
 - 2 x arrondi, 1 x arrondi, sans arrondi pour enchaîner les tables des deux cotés
 - Éléments additionnels comme vide-poche ou wun rangement stylos

Couleurs et matières

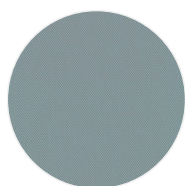
Tissus: Kvadrat Remix 3 (PG 21)



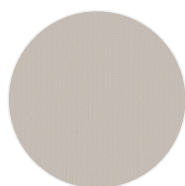
Tissus: Kvadrat Atlas (PG 21)



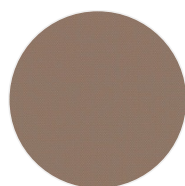
Tissus: Kvadrat Steelcut Trio 3 (PG 22)



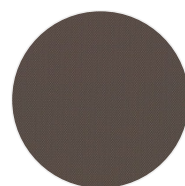
713



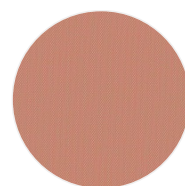
213



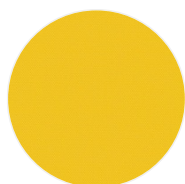
426



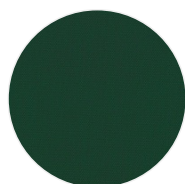
276



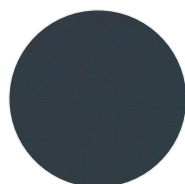
515



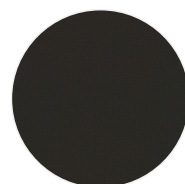
446



976

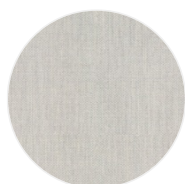


883

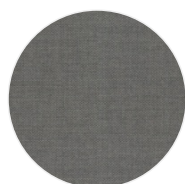


383

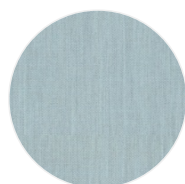
Tissus: Kvadrat Fiord 2 (PG 22)



101



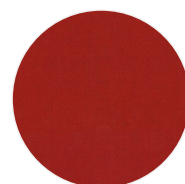
151



721



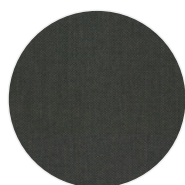
451



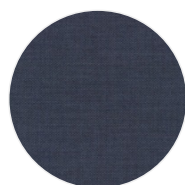
571



581



971

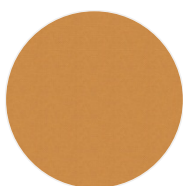


771

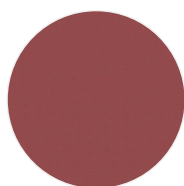


981

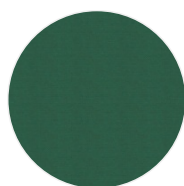
Tissus: Kvadrat Field 2 (Tissu fonctionnel) (NF P 92 507 M1) (PG 22)



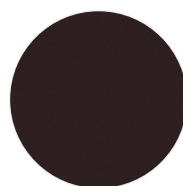
0463



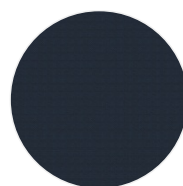
0643



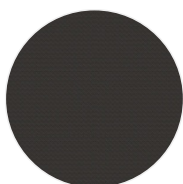
0963



0693

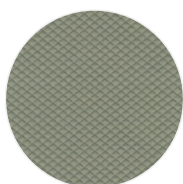


0782

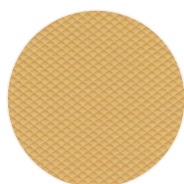


0182

Tissus: Kvadrat Febrik Mosaic 2 (PG 23)



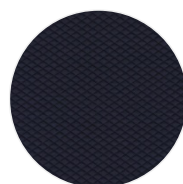
0922



0422



0682

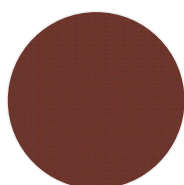


0692

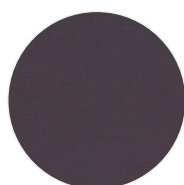
Tissus: Kvadrat Febrik Plecto (PG 23)



0224



0564

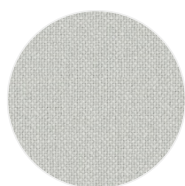


0654

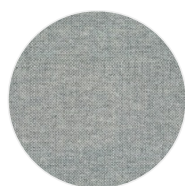


0984

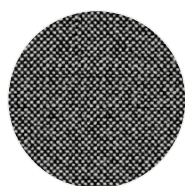
Tissus: Kvadrat Hallingdal 65 (PG 23)



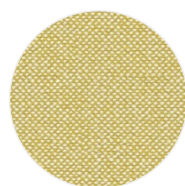
0103



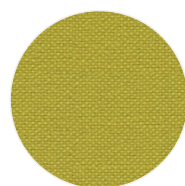
0116



0166



0407



0420

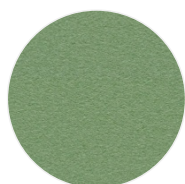


0687

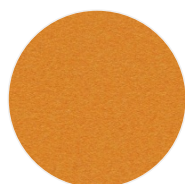


0764

Tissus: Kvadrat Divina 3 (PG 23)



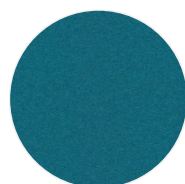
0856



0444



0584



0893

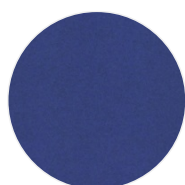
Tissus: Kvadrat Divina Melange 3 (PG 23)



0260

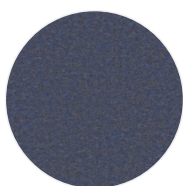


0567



0747

Tissus: Kvadrat Divina MD (PG 23)



0753



0813

Tissus: Kvadrat Coda 2 (PG 26)



116



442

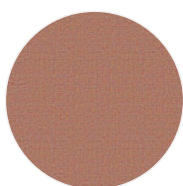


962

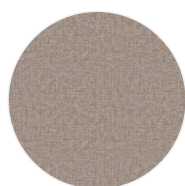


382

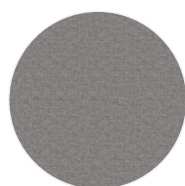
Tissus: Camira Carlow (PG 20)



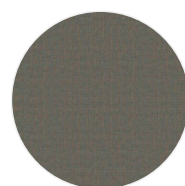
CLW06



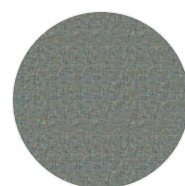
CLW04



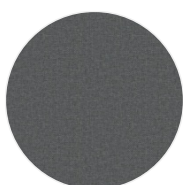
CLW01



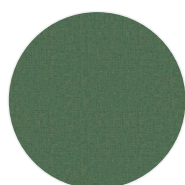
CLW17



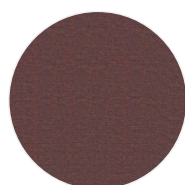
CLW09



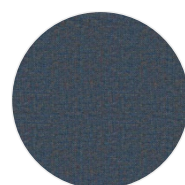
CLW23



CLW20

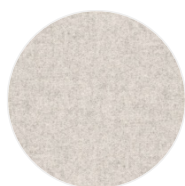


CLW08

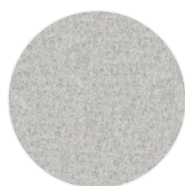


CLW12

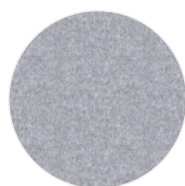
Tissus: Camira Blazer (PG 21)



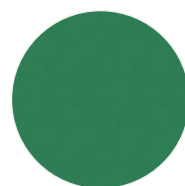
CUZ2Q



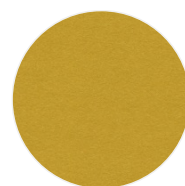
CUZ28



CUZ1E



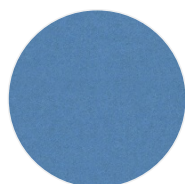
CUZ3A



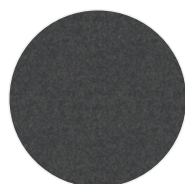
CUZ2W



CUZ21

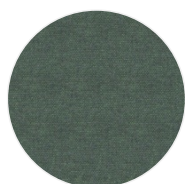


CUZ1V

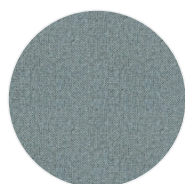


CUZ67

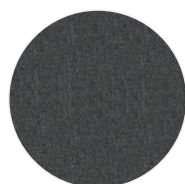
Tissus: Camira Mainline Flax (PG 21)



MLF32



MLF22

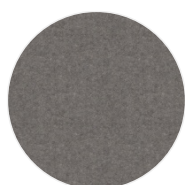


MLF16



MLF23

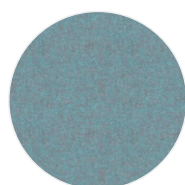
Tissus: Camira Synergy (PG 21)



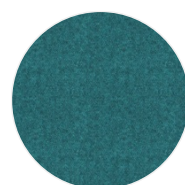
LDS35



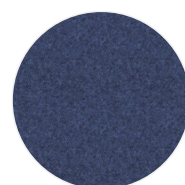
LDS46



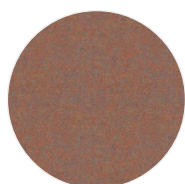
LDS56



LDS59



LDS62



LDS76



LDS77

Cuir véritable: Elmo Leather Elmosoft (PG 26)



00100



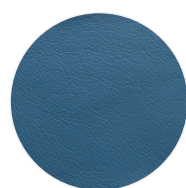
05011



22030



00109



17027



55002



01037



01061



01003



11049



54035



13072



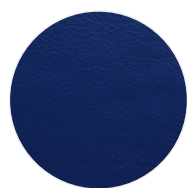
33001



33004



35126



77158



93129



95006



93068



71017



77127



97038



98015



99999