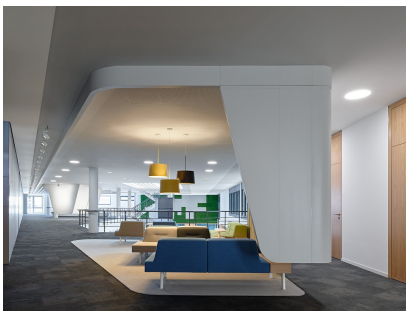


# SAP

ophelis is a contractual partner of SAP SE. SAP is working intensively on changes in its working environment and the various demands placed on it by employees. In a rapidly growing global company, room quality is part of innovation and corporate culture.



Here is an example of the redesign of an existing building: The assignment was to create a working environment for the employees that would promote communication and, at the same time, facilitate concentrated working.

Therefore, acoustical aspects were relevant. The acoustically effective S Series cabinets, which reduce long reverberation periods, were used in the project to facilitate uninterrupted working. Zoning was also accomplished with whiteboards on the cabinets. In general, SAP is increasingly relying on tables with electrical height adjustment to enable employees to work dynamically. The space was zoned into several areas: standing meetings at a high bench, a lounge for retreat, and options for meetings and project work.

In the new training centre in Walldorf, visitors can find space in the foyer on the ophelis docks landscapes.

Architecture: Scope Architekten

Photography: Zooney Braun and Marcus Buck