

L Series



Distinguished by the slightly curved leg shape. The functional aspects of the **L Series** make for an impressive ergonomic desk. Classic C leg with infinitely adjustable, spring-loaded comfort height adjustment.

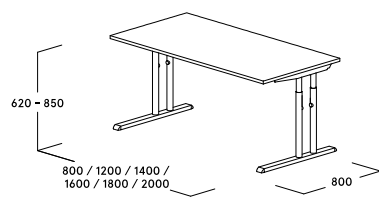
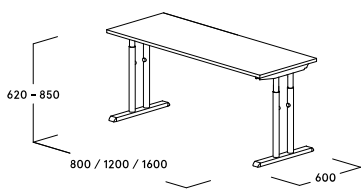


Functional aspects make a case for the L series: with the infinitely adjustable, spring-loaded height adjustment, the user can easily adjust it without calling on building services. Supplied as standard with sliding top and spacious cable channel, the L series provides easy access to convenient cables.

Product features

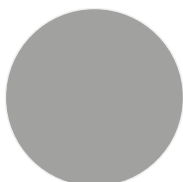
- C-shaped side leg
- Round tube
- Height adjustment:
 - Convenient infinitely adjustable heights from 620 – 850 mm
 - Via a spring-loaded tube-in-tube system
- Optional design elements: side leg covers
- Electrical outlets:
 - Sliding table top with brush seal on the rear edge of the desk
 - With side leg cover: Vertical cable tray as part of the rack
- Desk top thickness: 19 and 25 mm
- Certificates
 - Blue Angel UZ 38

Dimensions

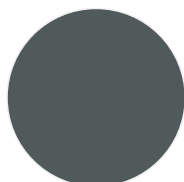


Colors and materials

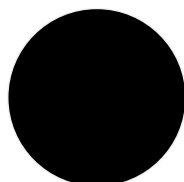
frames



silver metallic



iron grey
(RAL 7011)



black

Surfaces: Genuine wood



maple



maple, oiled



whitewashed
oak



whitewashed
oak, oiled



oak



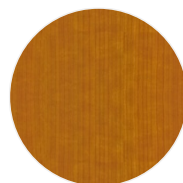
oak, oiled



beech



cherry wood



cherry wood,
oiled



walnut



walnut, oiled



smoked oak



black oak

Surfaces: Melamine



atlas white



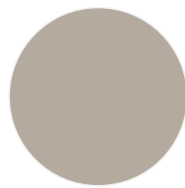
cream white



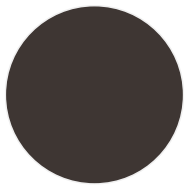
soft white



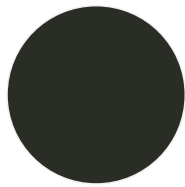
light grey



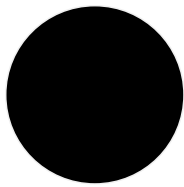
Silk grey



grey brown



graphite



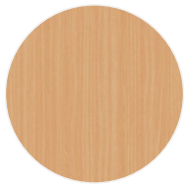
black



maple trim



oak light



beech light

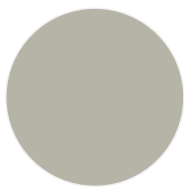
Surfaces: lacquer



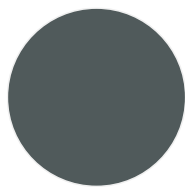
traffic white
(RAL 9016)



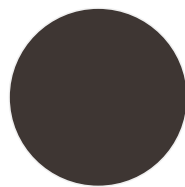
cream white
(RAL 9001)



silk grey
(RAL 7044)



iron grey
(RAL 7011)



grey brown
(RAL 8019)

Certificates



www.blauer-engel.de/uz38